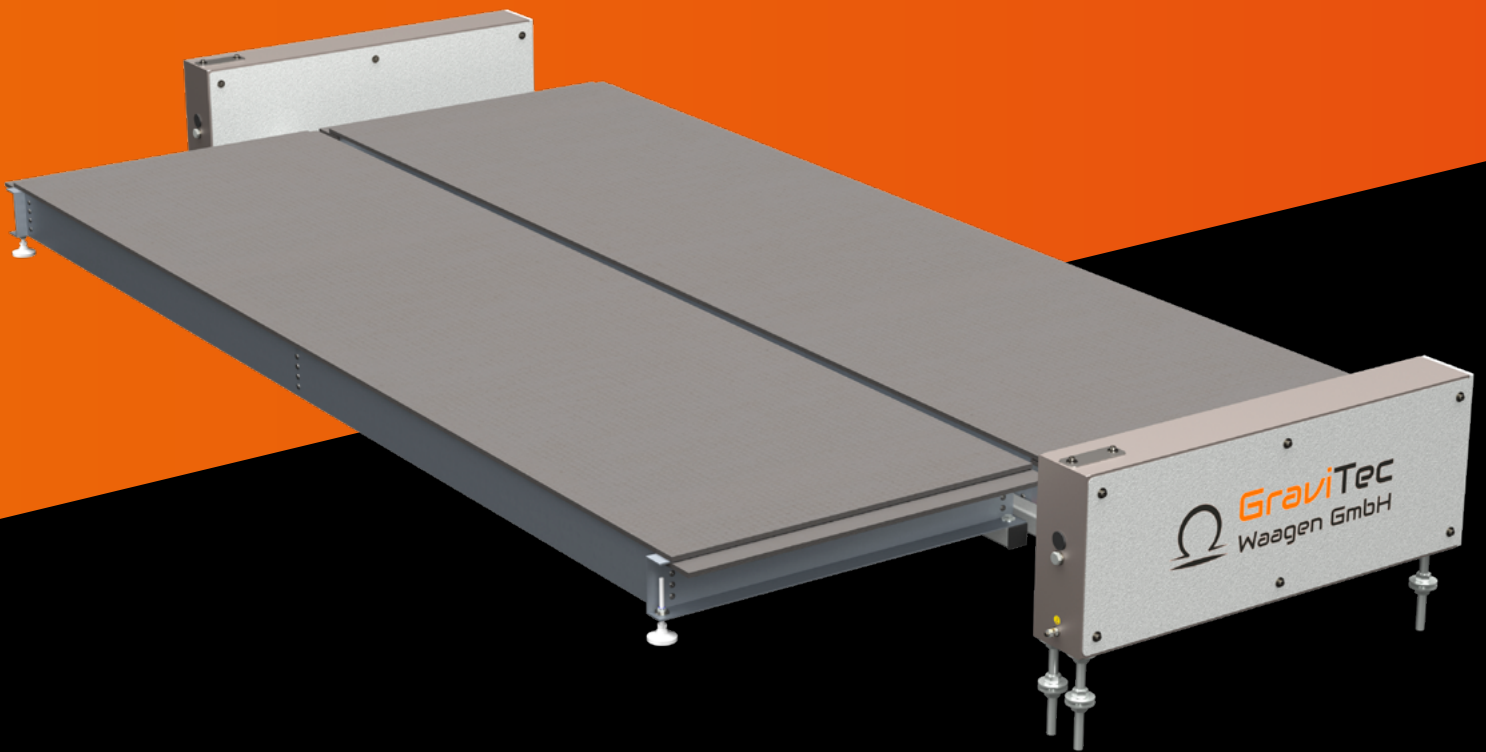


GT-FC

30 YEARS OF EXPERIENCE



MADE IN GERMANY



GRAMMAGE SCALE

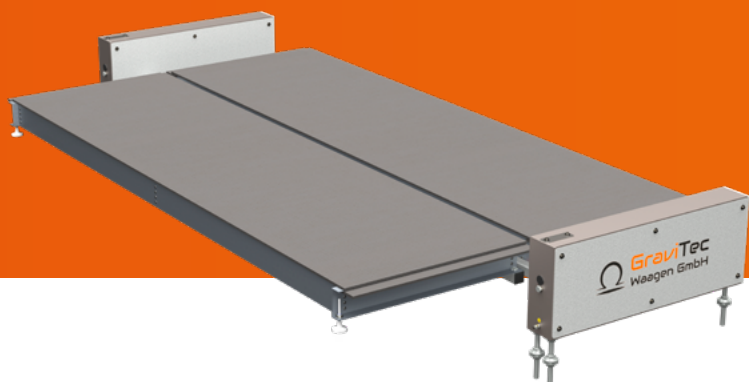
Robust, precise, reliable and durable: **weighing, monitoring, dosing and controlling processes for the plate industry.**

GraviTec – GRAMMAGE SCALE

We offer the perfect solution for continuous weighing in plaster-, OSB-, MDF-, HDF- and mineral-fibre plants. **Highest measurement accuracy, maintenance-free and extreme durable** - offered by GraviTec grammage scales!

We develop, manufacture and assemble high-precision industrial weighing systems for **static as well as dynamic applications**. Installation and commissioning on site available on request.

Our robust designs can be retrofitted in almost **any band conveyor system**. The support can be realised as required on the existing frame construction or directly on the hall floor.



TECHNICAL DATA GRAMMAGE SCALE TYP GT-FC

ATTRIBUTE	VALUE
Transported media	Chip-band- and fibre-continuous strands, plasterboard, OSB-, MDF-, HDF- and mineral-fibre cakes and mats
Load carrier	Weighing unit - DMC (Dynamic Motion Control) version
Measuring range / surface weight	Up to 100 kg/m ²
System-accuracy	Up to ±0,1 % of absolute value (depending on version)
Width of measuring bridge	500 mm - 3500 mm
Overall dimensions (L x W x H)	Depending on chosen size and measuring bridge width
Weight without packaging	Depending on chosen size and measuring bridge width
Operating voltage	24 V DC
Materials	Stainless steel and coated steel
Sensing element	2x DMS-load cells
Nominal load of sensing element	Depending on surface weight
Overload protection	Up to approx. 250 %
I/Os	PROFIBUS® PROFINET® Analog output (further options on request)
Supply voltage	230 VAC with conversion to 24 VDC (further options on request)
Operational temperature	-30°C up to +50°C
Operating conditions	Indoor
Transport requirements	General guidelines for normally sensitive machine parts apply
Storage requirements	Dry, indoors

Function

The **grammage scale of the GT-FC series** are used for continuous **grammage determination** of the fibre cake or continuous plates within the moulding strand. The weighing is performed regardless of the belt or strand speed, of the spreading width or the belt load.

Special Features

Interference based on friction as well as changes in belt- or strand tension are compensated due to the **special design** and therefore have no impact on **accuracy**.

Your Benefits

Trend behaviour and variations are identified during the production process. Thus quick and specific countermeasures can be applied, use of raw material is optimized and the **quality of the product can be increased**.

FIELDS OF APPLICATION

Versatile & compatible

- Plaster and fibres
- Endless plates within moist processes
- Fibre mats (stone- or mineral-wool, etc.)
- All other applications with high accuracy requirements

THE FOLLOWING SIZES ARE AVAILABLE AS STANDARD:

STANDARD SIZES	MEASURING SECTION LENGTH	SYSTEM-ACCURACY	DYNAMIC ACCURACY
GT-FC3-15	1500 mm	± 0,4 %	up to ± 0,9 %
GT-FC3-20	2000 mm	± 0,4 %	up to ± 0,8 %
GT-FC3-30	3000 mm	± 0,4 %	up to ± 0,7 %
GT-FC6-15	1500 mm	± 0,1 %	up to ± 0,3 %
GT-FC6-20	2000 mm	± 0,1 %	up to ± 0,25 %
GT-FC6-30	3000 mm	± 0,1 %	up to ± 0,2 %

(all values may vary based on specific implementation and equipping)

GraviTec

GRAMMAGE SCALE

An universally applicable measuring system for **accurate, reliable and continuous weighing** of gypsum- and plasterboard as well as fibre mats of any kind.

Suitable for high-demanding applications

- Quick and easy installation
- Robust, precise and maintenance-free
- Small integration space demanding and compatible

Applicable in challenging surroundings

- Maintenance-free
- Retrofittable in existing plants

Versatile and scalable

- Continuous weighing from moist to solid goods as well as from fine to coarse solids
- Various high-performance sizes available with slim designs for compact conveyor systems
- Individual measuring-widths and -sections applicable

Ready to use ex works

- Delivered ready for operation as it is already adjusted in our production plant.
- Installation and commissioning on site without support of external service providers possible

Special designs

- System accuracy up to $\pm 0.1\%$
- Individual solutions up to 100 kg/m^2

We look forward to receive your requests!

NEW:
Attractive
Leasing Offers

CONTACT

GraviTec Waagen GmbH

Röntgenstraße 42
D-86368 Gersthofen

**We are looking forward for your call,
we will be happy to assist you.**

Phone: +49 821 244 03 480

Fax: +49 821 244 03 481

Email: info@gravitec-waagen.de

30 YEARS OF EXPERIENCE

MADE IN GERMANY

www.GraviTec-Waagen.de